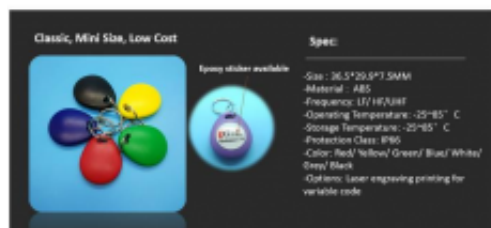


ID TUMBLER KEYFOB SMAKAB23

Brand: Smartjac Industries Inc
Product Code: SMAKAB05



Short Description

RFID Tumbler keyfob is constructed of durable ABS plastic housing, To be colorful with your design, this keyfob is able to print customized logo and ID numbering.

Description

RFID Tumbler keyfob is constructed of durable ABS plastic housing, To be colorful with your design, this keyfob is able to print customized logo and ID numbering. RFID Tumbler keyfob is the extension products of contactless card for more than ten years, it had been a typical secure badge easy carry by person for limit privilege access, efficient and reliable identification. RFID Keyfob / Keychains combined with our rich experience in RFID technology, with good looking and practical robust plastic housings, can be printed or embossing by customized logo. Every piece of Keyfobs / Keychains is with our compact design not only electronic performance and serious inspection but after stringent test to keep it work well for years. Any special requirement of tag please consult our sales, we had many different solutions to meet your specification.

They can easily be fitted to a normal metal key ring, most suitable for access control applications.

They are available with the most common RFID chip types in 125 KHz, 13.56 MHz and in UHF on request.

Advantages

- Low-cost, flexible production quantity, color of tag, variable programming requirement
- High quality engineer ABS material, forbidden any reclaimed material
- Optional wire diameter of copper coil and customized capacitance of antenna
- Programmable/laser engraving/pad printing/photo printing/full-color printing

RFID Keyfob SMAKAB23 Features

- Material: ABS+ Epoxy Pading Option?
- Dimension: 36.5 x 29.9 x 7.5mm
- Operating Temp.: – 25°C to 55°C
- Storage Temp.: – 25°C to 75°C
- Packing: 100pcs/Bag,1000pcs/Carton
- Colors: Gray, Black, Blue, Red, White, Green, Yellow, etc.

Applications

- Access control
- Identification
- Time attendance
- Loyalty system
- Payment NFC system
- Health clubs
- Leisure areas
- Promotion

Options

- Pad printing
- Full-color printing
- Laser engraved number
- Chip encoding
- Rings or thread is optional

Chip Available

- 125KHz 18000-part2: EM4200, TK4100, etc.
- 125KHz ISO11784/785: T5577, EM4305, Hitag1, Hitag2, Hitag S256, etc.
- 13.56Mhz ISO15693: ICODE® SLIX, Tag-it 2048, etc.
- 13.56Mhz ISO18092: NTAG® 210, NTAG® 212, NTAG® 213, NTAG® 215, NTAG® 216, Topaz512, etc.
- 13.56Mhz ISO14443A: MIFARE Classic®, MIFARE Ultralight®, MIFARE®

DESFire® EV1, MIFARE Plus®, etc.

– 860Mhz-960Mhz ISO/IEC 18000-6C: UCODE®, MONZA, HIGGS, etc.